

PSET-PT

Pitot tube connection set

PSET-PT is a Pitot Tube set made of flame retardant ABS grade PBDE-free plastic with increased thermal stability. It is designed for measuring air flow velocity in HVAC applications in combination with Sentera's DPS-2 and HPS-2 differential pressure transmitters. It can also be used to measure air flow volume in combination with a differential pressure sensor if the duct cross section is known. The product is available in two sizes - 150 mm and 250 mm, each with different size tube fixators.

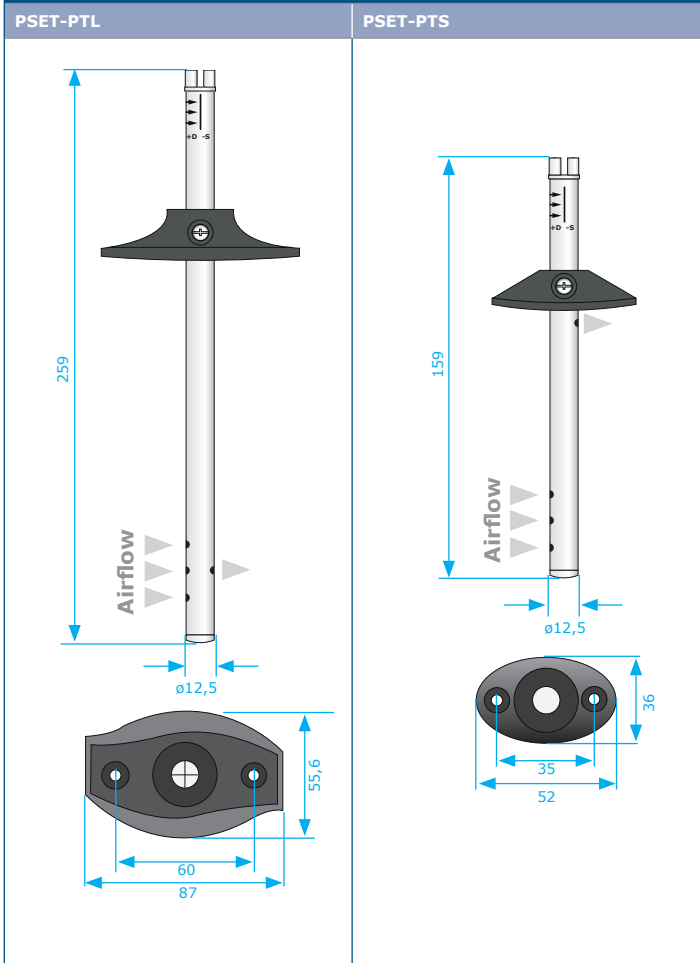
The set includes:

Component	Pieces	Material	Details
Pitot tube	1	POLYFLAM® RABS 90000 UV5, grey	PSET-PTS: 150 mm PSET-PTL: 250 mm
Flexible flange	1	PE LUPOLEN 1800S, black RAL 9004	PSET-PTS: 36 x 52 mm PSET-PTL: 55,6 x 87 mm
Screw for fixing tube into the flexible flange	1	Plastic, DIN 84, white	Length: 10 mm, slotted cheese head
Flexible tubing	1	PVC, transparent	Diameter: inside Ø = 5 mm; outside Ø = 7 mm Length: 200 cm
Screws	2	Metal, zinc plated	4, 2 x 9, 5 cross recessed pan head

Note: PSET-PTS-200 can be applied for duct diameters of 100–300 mm.
PSET-PTL-200 can be applied for duct diameters of 150–500 mm.



Fixing and dimensions



Article codes

	Flexible tubing length	Pitot tube length
PSET-PTS-200	200 cm	150 mm
PSET-PTL-200		250 mm

Standards

- WEEE Directive 2012/19/EC

Technical specifications

Impact strength	at 23° C	80 kJ/m ²
	at -30° C	45 kJ/m ²
Temperature of deflection under load (HDT)		80 ° C
Operating temperature		max. 96 °C

Packaging

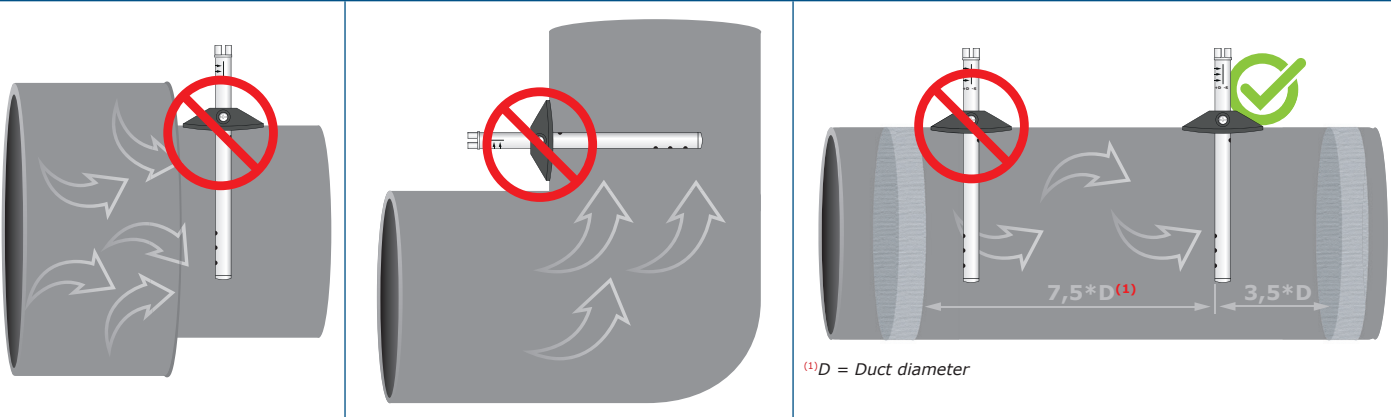


Article	Packaging	Length [mm]	Width [mm]	Net weight	Gross weight
PSET-PTL-200	Unit (1 pc.)	230	170	0,126 kg	0,127 kg
PSET-PTS-200	Unit (1 pc.)	230	170	0,113 kg	0,114 kg

PSET-PT

Pitot tube connection set

Mounting position

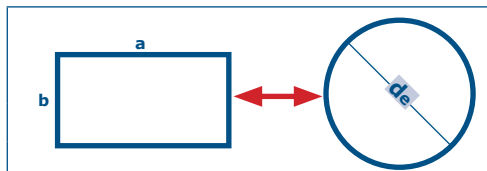


Installation requirements: The PSET-PTx-200 must not be installed in a turbulent air zone. Ensure sufficiently long settling zones upstream and downstream of the tapping point. A settling zone consists of a straight section of pipe or duct, with no obstructions. Avoid installation nearby filters, cooling coils, fans, etc. PSET will achieve the optimal result when the measurement is taken at least 7,5 duct diameters downstream and at least 3 duct diameters upstream from any turns or flow obstructions.

Note: When using a rectangular duct or pipe, you can use the following conversion table to calculate the circular equivalent diameter.

Circular equivalent diameter - de (mm)

		Duct side - b														
(mm)		100	150	200	250	300	400	500	600	800	1000	1200	1400	1600	1800	2000
Duct side - a	100	109	133	152	168	183	207	227								
	150	133	164	189	210	229	261	287	310							
	200	152	189	219	244	266	305	337	365							
	250	168	210	246	273	299	343	381	414	470						
	300	183	229	266	299	328	378	420	457	520	574					
	400	207	260	305	343	378	437	488	531	609	674	731				
	500	227	287	337	381	420	488	547	598	687	762	827	886			
	600		310	365	414	457	531	598	656	755	840	914	980	1041		
	800			414	470	520	609	687	755	875	976	1066	1146	1219	1286	
	1000				517	574	674	762	840	976	1093	1196	1289	1373	1451	1523
	1200					620	731	827	914	1066	1196	1312	1416	1511	1598	1680
	1400						781	886	980	1146	1289	1416	1530	1635	1732	1822
	1600							939	1041	1219	1373	1511	1635	1749	1854	1952
1800								1096	1286	1451	1598	1732	1854	1968	2073	
2000										1523	1680	1822	1952	2073	2186	



The equivalent diameter of a rectangular tube or duct can be calculated as (Huebscher):
 $de = 1,30 (a b)^{0,625} / (a + b)^{0,25}$

de	equivalent diameter (mm, inches)
a	length of major or minor side (mm, inches)
b	length of minor or major side (mm, inches)

Global trade item numbers (GTIN)

Packaging	PSET-PTS-200	PSET-PTL-200
Unit	05401003010785	05401003010778
Carton	05401003301609	05401003301593
Box	05401003502372	05401003502365